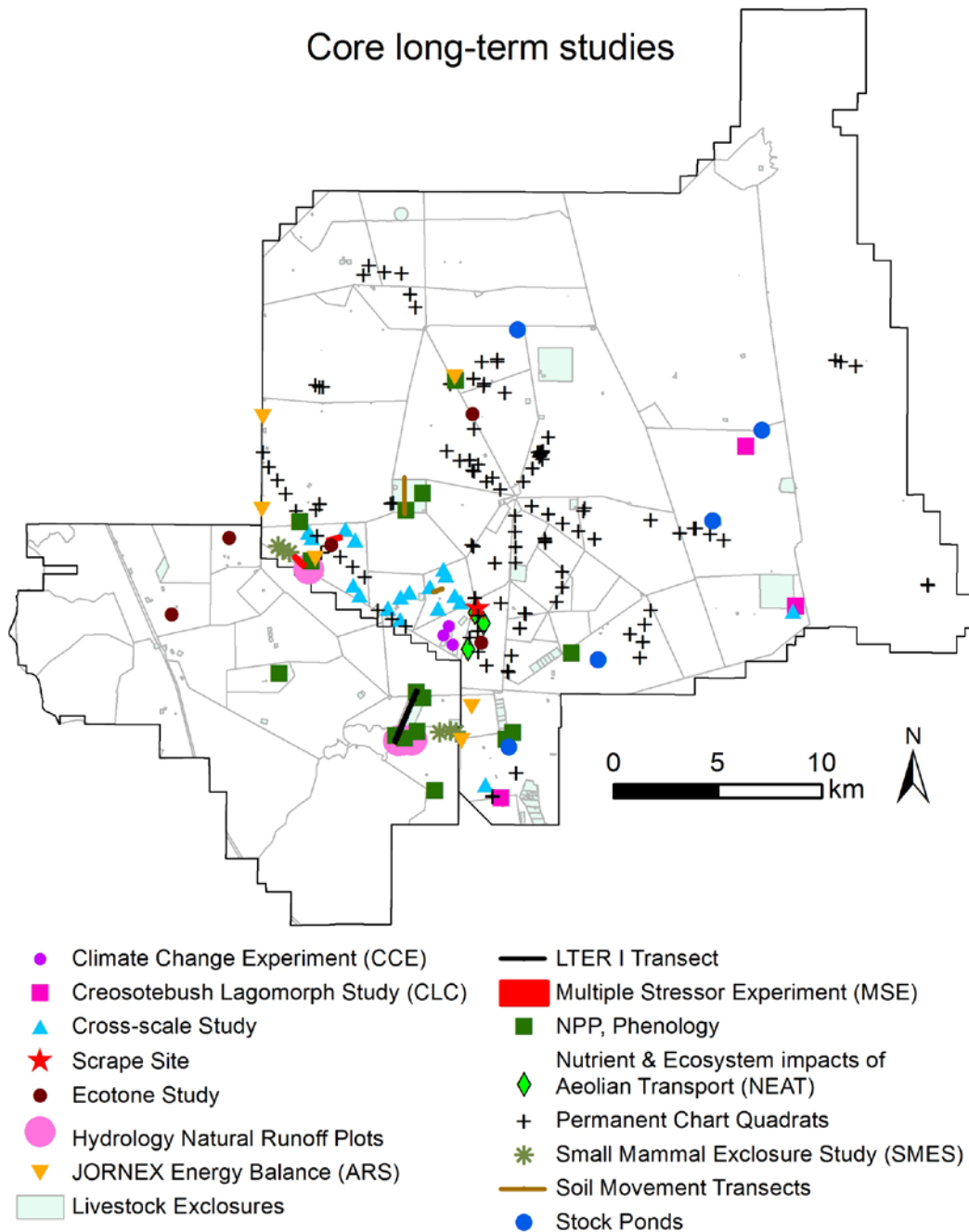


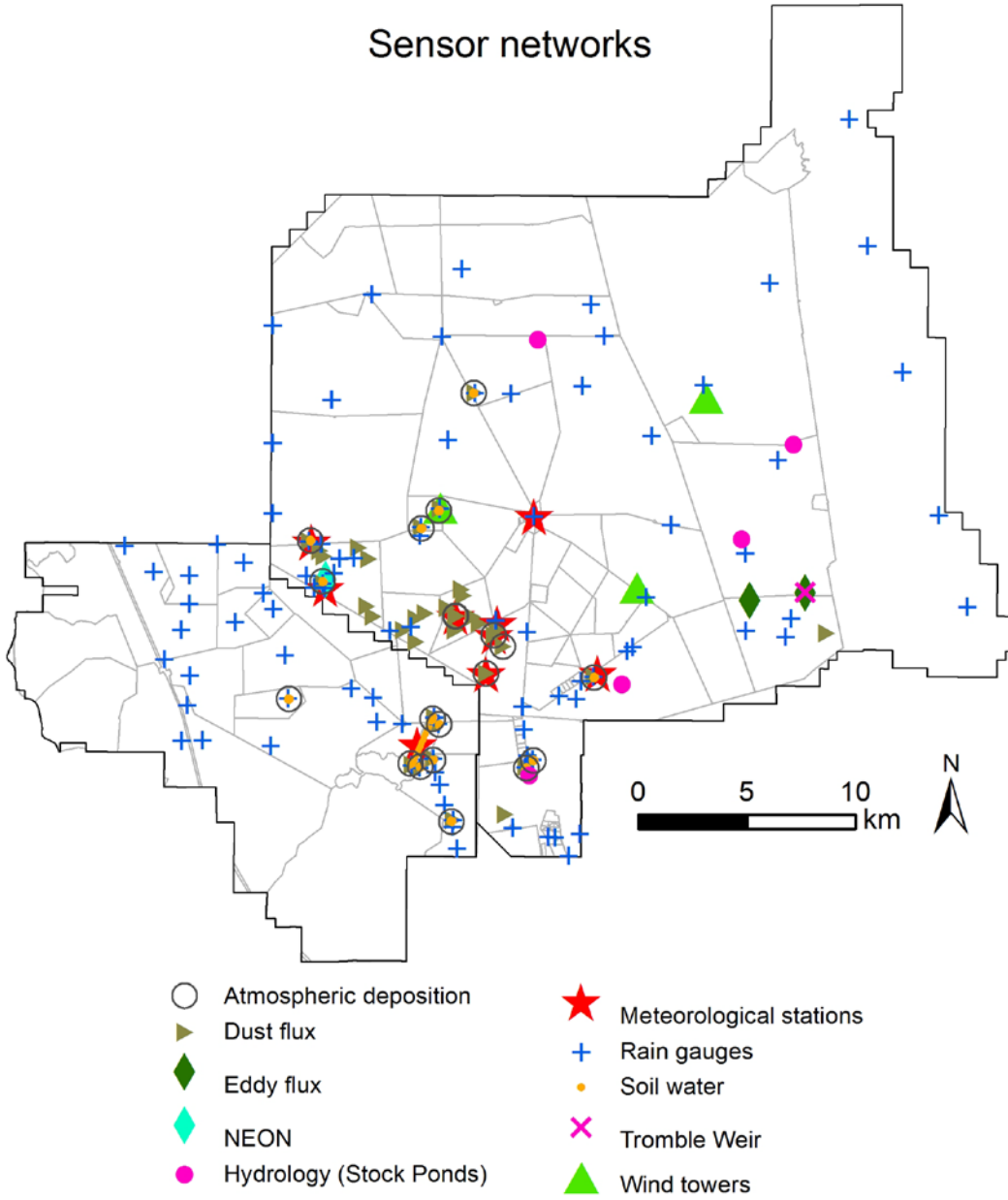
Jornada Basin LTER long-term studies and sensor networks

Contact(s): John Anderson (NMSU)

Long-term context: Core long-term studies and distributed sensors provide: 1) the context for short-term and new efforts; 2) data to separate trends from natural variability; 3) insights needed to design new experiments; and 4) comparative data for the LTER network, other research sites nationally and globally, and emerging networks such as NEON and the LTAR.



Sensor networks



Relationship with the LTER VI proposal: The long-term studies and sensor networks support all parts of the LTER VI programs.