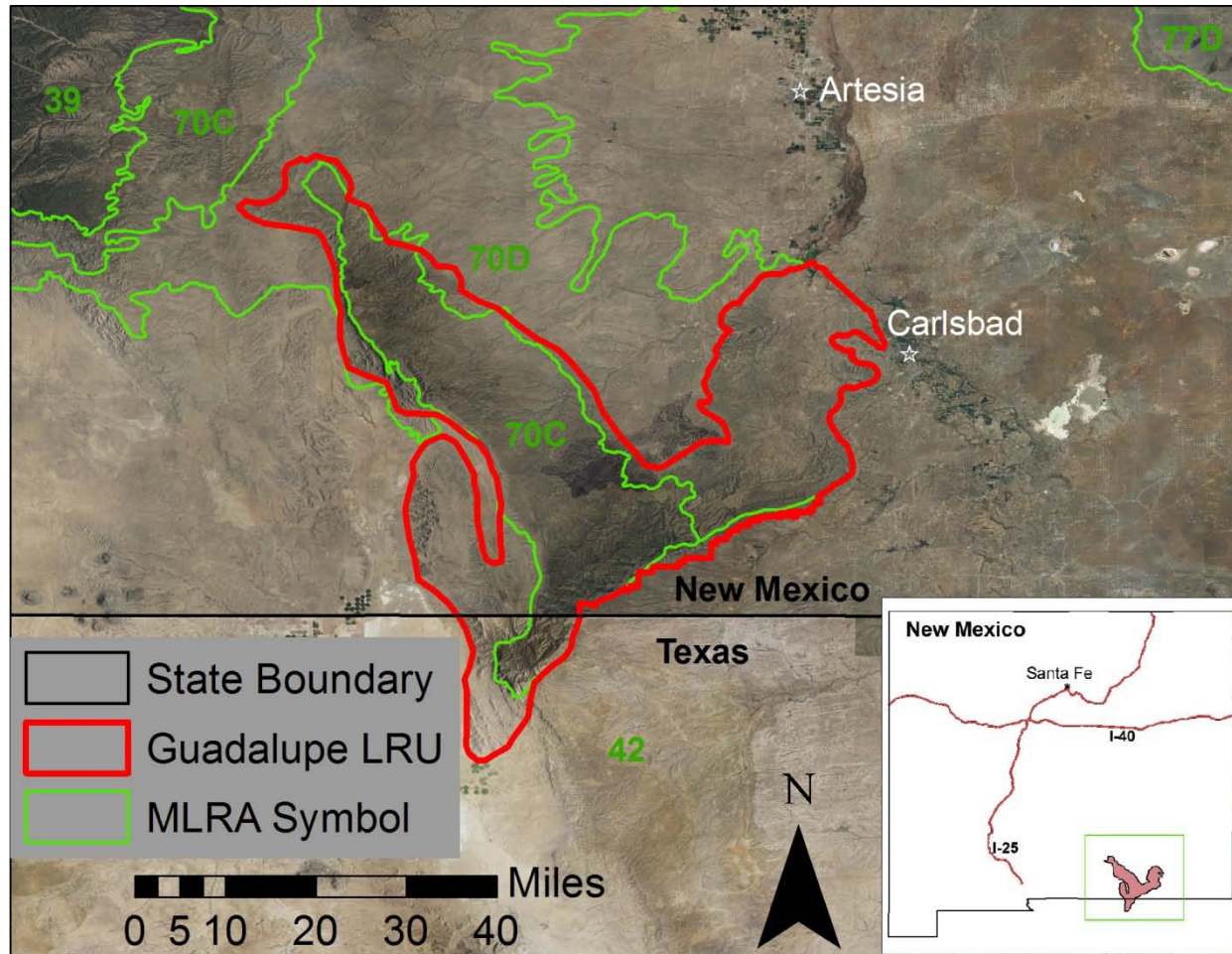


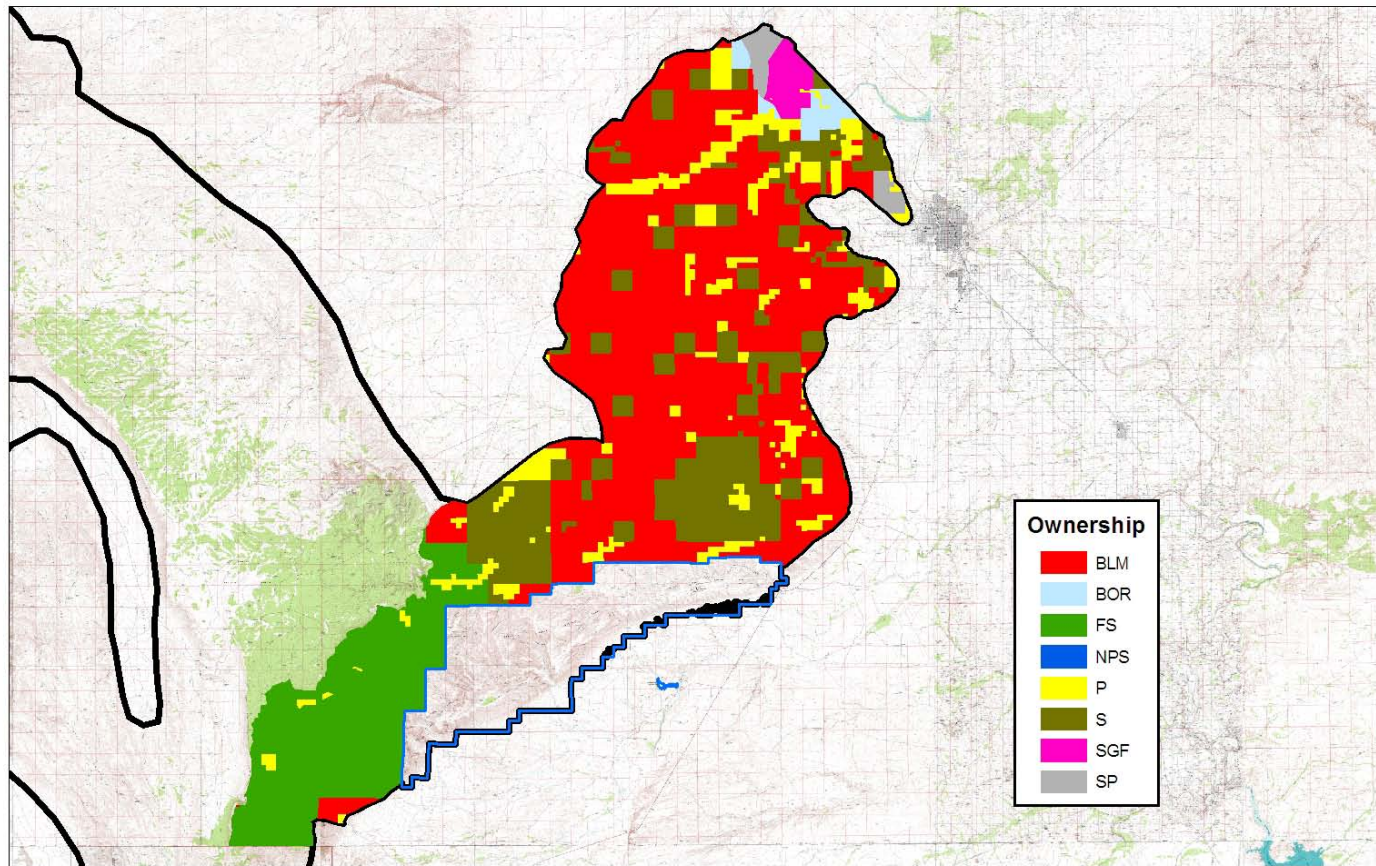
A Good, Old Fashioned ESD Workgroup

By Scott Woodall and Steve Daly

Guadalupe Mountains and Ridge LRU



Who should be in the workgroup?



What are the benefits of a local workgroup?



- Local knowledge and experience.
- Access
- Help
- Buy in
- Reduced costs
- Collaboration
- The creation of a stronger product.

The Guadalupe Mountains and Ridge Workgroup

Laurie Kincaid-Rancher, Carlsbad

Garth Grizzle, District Conservationist, Area Range Con, *retired NRCS*

Charles Hibner-MLRA 70 SS Leader, NRCS

Aaron Miller-MLRA 70 Project Leader, NRCS

Logan Peterson-MLRA 70 Soil Scientist, NRCS

Tracy Hughes-Range Conservation Technician, Carlsbad, NRCS

John Tunberg-State Rangeland Management Specialist, New Mexico NRCS

Herman Garcia-Ecological Site Inventory Specialist, Southwest Region 8, NRCS

Mark Moseley-Ecological Site Inventory Specialist, Texas Region 9, NRCS

Renee West-Biologist, Carlsbad Caverns National Park

Kent Schwartzkopf-Chief, Stewardship and Science Div., Carlsbad Caverns National Park

Samuel Denman-Cultural Resource Specialist, Carlsbad Caverns National Park

Susan Norman-GIS Specialist, Carlsbad Caverns National Park

Lu Burger-Natural Resource Specialist, State Office, BLM

Michael McGee- Hydrologist, Roswell Field Office, BLM

Steve Daly-Soil Conservationist, Carlsbad Field Office, BLM

Mark Sando-Rangeland Management Specialist, Guadalupe District, USFS

Scott Woodall-Rangeland Management Specialist, MLRA 70 SSO, NRCS

Michael Margo-Rangeland Management Specialist, MLRA 42.3 SSO, NRCS

Darren James-Researcher-USDA-Jornada ARS

Incorporating the workgroup within the development process of ESDs

- Define the LRU
- Sell the ESD program to local land managers.
- Tier one: recon and inventory with local land managers.



Incorporating the workgroup within the development process of ESDs



- Tier one workgroup meeting-discussing STMs.
- Tier two and three data collection.
- Data analysis.
- Drafts and edits.
- Final workgroup meeting-finalizing drafts.

Conclusion

Workgroups are important for bringing together ideas and experience in a collaborative effort that strengthens ESDs.

